

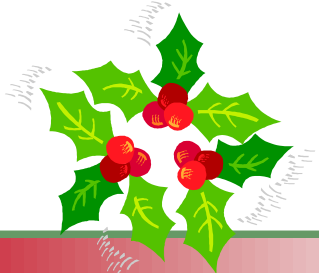


Whitebridge News Winter 2014



Inside this issue:

Arrivals, Expansions and Departures	2
Swanline Print Ltd - Small Medium Enterprise Award	4
ABV Training - "Social Media—Essentials for Business"	5
STING say a big thank you!	7
Phil's Health & Safety Column	10
A new venture - Acoustic Attenuations	15
Business News from Janet	16
Competition time!	19
The Back Page from Charles	



The Whitebridge Family Christmas Tree !



Another winter edition is upon us packed full of interesting information.

This year we have an extra Christmas Tree to celebrate the festive season positioned just outside our reception.

The Tree has stood for many years in the garden of Mrs Baines' house, but has grown so large it has had to be removed. Rather than just have the tree felled and cut up, it was decided to bring it here for Christmas so we could all enjoy its beauty if only for a few weeks.

Even in winter we try to make the estate a pleasant and attractive place to be by keeping the borders tidy and having winter pansies to add some colour where we can.

Soon after Christmas we can look forward to the spring and once again the Estate can bloom.

We wish all our tenants a very Happy Christmas and a Prosperous New Year

NEW ARRIVALS.....NEW ARRIVALS.....NEW ARRIVALS.....NEW

Xtraweld Services Limited

A warm welcome to Xtraweld who are in the process of setting up a new venture as a sideline business on the Estate in Unit 4B. We wish them well.

Welcome to Karl Reed—who has taken on Unit 11A trading as Karl Reed Painter and Decorators.

Current Electrical—We welcome Current Electrical to Unit 16G

Impact China Limited

We are pleased to announce that Impact China now has new owners, Julie Lowe formerly an Impact China employee and Lorna Bennett were able to purchase the business after the sad loss of Richard Sewell early this year.

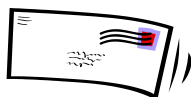
We wish them both every success for the future.

LATEST RECOMMENDED POSTING DATES FOR CHRISTMAS 2014 UK INLAND SERVICES

THURSDAY 18 DECEMBER—2nd Class Royal Mail Signed for®

SATURDAY 20 DECEMBER—1st Class Royal Mail Signed for®

TUESDAY 23 DECEMBER—Royal Mail Special Delivery Guaranteed®



Expansion and on the move

Whitebridge Tiles took on the former Whitebridge Bathrooms Unit and have now made two units into one. A very attractive Tile and Bathroom Showroom. We wish them well.

Gust Swim School—will be leaving us in the new year to take up their new premises (formerly Thompson Cars) on Whitebridge Way. This is a very exciting venture as they are creating a swim teaching venue with a 12 metre by 6 metre swimming pool. We wish them our very best wishes.

Greystones & Prettyness the companies run by Steve and Rae Fradeley will be moving into the offices being vacated by Gust Swim School—We wish them well in their relocation.

Tecni-Form are expanding their business with the addition of a new company **"Acoustic Attenuations"** more details of this new venture can be found on page 15. We wish them every success.

And finally

Since our last Newsletter in June there have been a few departures.

After many years here at Whitebridge—Littlewoods Pools Area Office has sadly closed. We send our very best wishes to Alan and Don for the future.

Whitebridge Building Supplies have closed their doors in Unit C and Neville from Palmer Windows has moved to pastures new.

Leek & Potato Soup



Ingredients

50g butter
 450g potatoes, peeled and cut into 1cm pieces (try Golden Wonders or Kerr Pinks)
 1 small onion, cut the same size as the potatoes
 450g white parts of leeks, sliced (save the green tops for another soup or stock)
 850ml-1.2litres/1½-2pts light chicken or vegetable stock
 142ml carton whipping cream
 125ml full-fat milk
 the white part of 1 leek
 a small knob of butter
 finely chopped chives

Method

Melt the butter in a heavy saucepan. When it foams, add the potatoes, onion and leeks and toss them in the butter until they are well coated. Season well with salt and freshly ground pepper and toss again. Put a disc of greaseproof paper (called a cartouche by chefs) on top of the vegetables to keep in the steam), then cover the pan with its lid. Cook over a gentle heat for 10 minutes, or until the vegetables are soft.

Uncover the pan and discard the paper. Pour in 850ml/1½ pints of the stock, bring to the boil and simmer until the vegetables are just cooked – about 5 minutes. Do not overcook or the soup will lose its fresh flavour.

Purée in a blender until silky smooth, in batches if necessary, then taste and adjust the seasoning. Return the soup to a clean pan and stir in three quarters of the cream and all of the milk.





Swanline Print Ltd, Whitebridge Park, Whitebridge Way, Stone, Staffordshire ST15 8LQ

Registration No 4112878

Confidential Print and Conversion Services for the Packaging and Point-of-Sale Markets

We do not supply end users



Swanline Print Ltd, a confidential trade-only supplier of printed packaging and point-of-sale displays, picked up the award for SME (Small-Medium Enterprise) of the Year at the UK Packaging Awards in November.

The awards were held by Packaging News magazine at the London Hilton on Park Lane, and hosted by comedian Andy Parsons. Swanline, who were also highly commended in the category of investment Project of the Year for their ground-breaking work in digital print, faced stiff competition for the award, and the company's Managing Director Nick Kirby was on hand to collect it.



"It's a fantastic achievement and one that I'd like to dedicate to each and every member of our team at Swanline, without whom none of this would have been possible. To win one award and be highly

commended in another category is phenomenal for us".

"We are still very much a family busi-

ness and to be recognised in front of so many who have done so much for packaging is an honour. The companies shortlisted for this award were very strong, so we must be doing something right!"

Swanline use James Bond-themed imagery to market themselves as 'the industry's secret service' - tongue-in-cheek play on the confidential nature of their business—and now have some of the most recognisable branding in their industry.





www.abvtraining.co.uk



Keen to start using social media to promote your business but unsure how to get started?

Located at The Training Centre in unit 7d, Whitebridge Lane, abv Training Ltd have recently increased their team and expertise. These exciting developments enable us to offer additional training to support growing businesses providing tools to increase their customer base and ultimately turnover.

After successfully piloting exclusive courses in Social Media we are delighted to offer the opportunity for local businesses to take advantage of our open **“Social Media - Essentials for Business”** course running on Monday 19 January 2015 between 9.30 and 3.30 at the Whitebridge Training centre

The course is ideal for any small business owner or manager and provides an opportunity for them to get to grips with how Social Media works and explore the following

- Identify the advantages to your business of a social media strategy
- Introduction to the power and potential it has to add value to you & your business
- The various platforms to consider
- The need to develop engagement and the social media conversation with customers
- Getting set up and the basics. Predominantly looking at Facebook and Twitter but also exploring other channels e.g. You Tube
- Clear ideas of what, how and when to post
- tools and methods to optimise time spent on Social Media activity

Developing a plan and strategy

It's a fun interactive day with live examples of excellent practice. Our experienced trainer aims to remove the fear barriers and show what can be achieved. **Course numbers are limited to ensure plenty of opportunity for our trainer to answer queries and provide individual support.**

The cost of the 1 day course is £195+VAT and includes a comprehensive course handbook and guide, refreshments and a light lunch. We are offering an **Early Bird Saving of £20 for any bookings made before the end of 2014.** We offer a social media management service and all delegates qualify for a FREE post course 1:1 meeting to discuss their strategy and how we can help further. **#letushelpyougrow**

Whitebridge News

Our Receptionist, Janis English, who had been with us since November 2012 left us in October so that she could concentrate on the refurbishment of her house. Our new Secretary/Receptionist is Bev Wilding who some of you may remember for her many years of service with our former tenants Staffordshire Environmental Fund who were located in Units 27/28 until the Charity was wound up in January of this year.

Another new member of staff will be joining us on the 5th January 2015. Gareth James may also be known to some of you on the Estate. He will be joining us as a member of the Maintenance Team.

We wish both Bev and Gareth every success in their new roles here at Whitebridge Estates.

In the last newsletter we reported the sad passing of two of our tenants David Hawbrook and Richard Sewell and on 28th September 2014 we sadly lost a very popular former tenant John Nickisson.

John and his daughter Laura had operated on the Estate firstly as PMS Packaging and more recently as Heritage Packaging.

Our condolences and sympathy go out to John's family and friends.



On the 6th March 2015 at 7.30pm, STING (Staffordshire Therapeutic Independent Neurological Group) are organising a tour of Limestone Brewery in Stone

Tickets are priced @ £13.00 each and are available at Whitebridge Estates Reception and via email from STING @ stings2014@gmail.com or Tel: 07847 872635

(all proceeds will go towards STING's valuable Community Charity work)



STING based at Unit22B, would like to say a big THANK YOU to everyone who has supported the group over the last few months and given them something to look forward to for 2015. The last few months have not been easy but like a Phoenix rising from the ashes STING has continued to grow. This would not have been possible without our many supporters in particular Charles Baines who has helped us to overcome several obstacles. We would also like to thank Stone Lions, Stone Town Council, Stone Round Table and Councillor Philip Jones. More recently we have been helped by Ron Jefferies from Stone Property Buyers.co.uk (based on Whitebridge Estates) and Limestone Breweries. See enclosed Advert

STINGS 2015 programme includes

Monday: Tai Chi and Gentle Exercise 11am

Wednesday: Wellbeing Wednesdays including Gentle Exercise with Harvey Butters at 11am

Friday: One to One programmes including Exercise, Stress Management, Use of Medimotion Bike, Treadmill and Vibrogym with Carol Mcgranachan (Appointment system from 10am)

One to One Physiotherapy with Claire Evans Appointment system from 9.15 am

All STING's activities are open to anyone affected by a Neurological condition please contact stings2014@gmail.com for further information

Submitted by Liz Gumbley



YOUR LOCAL ONSITE PHARMACY

PRESCRIPTIONS DELIVERED TO YOUR WORKPLACE

MEDSCENE
pharmacy ...
Unit 19, Whitebridge Estate, Stone



Introducing Medscene Pharmacy at Unit 19, where we can process your prescriptions through our brand new state-of-the-art automated facility right here on the Whitebridge Estate.

In the process of developing our service, we'd now like to offer our high-tech pharmacy service to our local neighbours on the estate.



Our machines dispense your medication into individual packets organised by date and time, making it easier for you to remember to take your medication. Equally if you prefer conventionally dispensed manufacturer's packaging, we can do this too!

We are happy to deliver your medication to your workplace for your convenience and take payment by cash or cheque if you pay NHS prescription charges. Unfortunately at present we cannot accept card payments.



We are a fully registered and regulated NHS mail order pharmacy. *We provide the above services at no additional cost to you.*

Simply contact us by email or call our phone number for more details. We will require some details from you, then you can drop your prescription into our letterbox, and we will deliver your medication to you and take payment (if required).

*Please note that due to pharmacy regulations we are not allowed to receive visits from patients onsite.



www.medscenepharmacy.co.uk • Phone: 01785 288290 • Email: info@medscenepharmacy.co.uk

Christmas indoor flowering plants



PHALUENOPSIS (moth orchid) - grows well in centrally heated rooms and has long-lasting flowers produced all year round. They are the most popular indoor orchid.

CYCLAMEN PERSICUM 'Halios bright fuchsia' is a tuberous perennial which can grow to 30cm with silvery marbled leaves and vivid purplish—red flowers borne in Autumn and early Winter



CYMBIDIUM orchid—have highly decorative flower spikes and are one of the least demanding indoor orchids. To flower well the plants need a distinct temperature drop day and night—flowering time mid Autumn—mid Spring

POINSETTIA—are cheery plants that are widely grown indoors over Christmas for their bright coloured bracts. They are often disposed of once they start to fade, but with a little care, you can keep them all year and the bracts will colour up again the following year.



MULLED WINE

A CLASSIC WINTER
WARMER

Ingredients

1 Bottle red wine
60g/2oz demerara sugar
1 cinnamon stick
Grated nutmeg
1 orange, halved
1 dried bay leaf
Tot of damson gin or sloe (opt)

Method

Put wine into a saucepan with orange, sugar, bay leaf and spices
Heat gently until sugar has dissolved
Take off heat stir in the (opt) sloe or damson gin
Strain into heatproof glasses and serve at once....mmm!

Don't you sometimes just wish you could hibernate?



Hedgehogs hibernate anywhere from a few weeks to six months, depending on the weather. During hibernation, their heart rate drops almost 90 percent. They wake briefly if their body temperatures drop too low and let their waking heart rate warm their bodies up before going back into hibernation.

Hedgehogs also go into estivation when the weather is really hot. Estivation is like hibernation, except it takes place during hot weather, instead of cold weather. When the weather is scorching hot, who can blame a hedgehog for passing out for a while?



Many a loving pet owner have cried out in dismay when they found their hamsters dead, only to learn they were actually in torpor (a light hibernation).

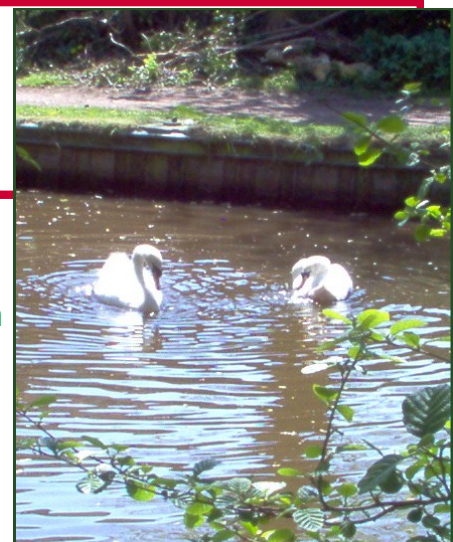
Once those hamsters were rustled about, they probably awoke pretty grouchy and scared. Hamsters hate being awoken from this state. In addition, the sudden disturbance can cause a heart attack, literally scaring them to death.

Hamsters torpor for a few days to a week at a time when the weather is cold. They will only torpor if there is plenty of food nearby so they can snack during brief waking bouts.

British Wildlife Rescue Service based at Amerton Farm

Just a reminder that there is a wildlife rescue center locally, should you see any animals here at Whitebridge in any distress please contact the Wildlife Rescue at

Amerton direct on 01889 270294.



THE HEALTH & SAFETY COLUMN from Phil Darby

HAPPY 40th BIRTHDAY to the Health & Safety at Work Act

In 1974 the Health & Safety at Work Act was introduced and the safety of workers throughout the UK was changed forever. In 1974 fatalities to employees covered by the legislation stood at nearly 700 per year. Forty years later this figure has reduced to 148 and non fatal injuries have reduced by 75%. Until the introduction of the act changes to Health & Safety tended to be introduced after a major incident what the HSAW changed was to prevent the accidents happening in the first place.

Risk assessments and safe methods of working are now an everyday occurrence in the workplace but unfortunately “*Elf & Safety*” regulations are very often misinterpreted and unfairly derided by the general public

The HSE has hit back in recent months by publishing its Health & Safety myths to highlight areas where “*Elf & Safety*” is used as an excuse not to do things.

Forty years on from 1974 and the Act has adhered what it set out to do which is to insist on high standards of Health & Safety in all areas of work, all that is needed now is for the law to be applied with the common sense that inspired it in the first place

Have a safe and happy Christmas.

Phil Darby



Interesting facts on Britain

Between 7 am and 10am there are 36 million of us commuting

There is 82,000 tonnes of rubbish collected by refuse trucks every day

There is over 3/4 of a billion pounds transported on Britain's roads everyday

Everyday there are more than 7,500 civilian aircrafts in Britain's airspace with more than half a million passengers!

In just landfill alone 109 square miles of British countryside is used up

The average motorist will spend more than 6 months of their life stuck in traffic

Within a week waste sent to sewage plants is clean enough to be pumped back into our taps



At the peak of the working day we British send more than 5000 text messages per second

On average Britain's water pipes carry 16 billion litres of water. That is enough to fill 18 million bathtubs

On a typical day the English Channel, being the busiest shipping lane in the world, carries 400 plus vessels travelling through the Dover straits, the biggest weighing up to 150,00 tonnes and taking 3.5 miles to come to a stop

Why Can't the English Speak and Write English?

In recent weeks I have received several emails which enquired, "I hope your well" Another one stated "I would of thought....."

"I hope your well should have continued with something like "doesn't run dry" but I think the enquirer really meant "I hope you're well". "I would of thought" was just sloppy English for "I would have thought" but we all seem to be getting lazy about speaking and writing in our native language.

A few years ago a book about punctuation became a best seller. It was called, Eats Shoots and Leaves and referred to a popular joke about punctuation. It goes like this:

A Panda goes into a restaurant and after eating his meal produces a handgun which he fires wildly into the air. As he gets up to leave the proprietor of the restaurant asks him why he has done such a thing and the Panda hands him a wildlife book and says "look it up in the section on Pandas" The man thumbs through the book and on page 107 finds the following Pan-da, a black and white bear like creature native to China. Eats, shoots and leaves. The comma unnecessary and totally changing the way the sentence should read.

Maybe it is the text and email generation who are to blame for the decline in the correct use of English but it must be very amusing to foreigners who are taught to speak and write our language better than we do.

Anyway,

LOL 4EAE CU L8TR BFN

Anon



World War 1 - why did it ever start?

It was in the city of Sarajevo on the 28th June 1914 that a chain of events started that led to the outbreak of war.

Within a month and a half, Europe's five major powers were at war.

On the 28th June 1914 Archduke Franz Ferdinand and his wife, of Austria, were murdered by a Serbian Nationalist Gavrilo Princip who wanted the Austrian/Hungarian Empire out of Bosnia. This was the catalyst for declarations of War.

The Austrian/Hungarian government blamed the Serbian government and presented an unacceptable ultimatum to Serbia. As all the demands were not adhered to by Serbia the Austrian/Hungarian artillery opened fire on Belgrade which in turn caused Russia to mobilise. Germany sent an ultimatum to Russia to cease which was ignored leading to Germany declaring war on Russia. France then mobilised their forces and Germany decided to attack France through their neighbours Belgium.

Great Britain had signed a treaty with Belgium in 1839 agreeing that they would attack anyone who attacked Belgium, there was no alternative other than to be dragged into the conflict. On the 4th August 1914 Great Britain declared war on Germany.

On the 11th of November each year, the commonwealth hold a day of remembrance as time moves on will the young people of today truly realise that there were over 37 million military and civilian casualties on all sides during this most unnecessary war?

The Whitebridge Christmas Past Editions !



December 2005 Santa made a visit to Whitebridge with his helper can you guess who they are? We took a look at Christmas celebrations around the world

December 2006 Whitebridge Estate in the Christmas spirit with the tree in all its glory, and the Christmas newsletter was 35% larger than the previous year!



December 2007 a very festive front page edition, with an article on Whitebridge over the past 25 years this entailed a story of Ghosts! here at Whitebridge but the unit was left unnamed—perhaps the ghost of Christmas past!!!!

December 2008 the Whitebridge Christmas card scene with the staff can you recognise any of them, there are a few changes!





December 2009 the tree on the main entrance to Whitebridge Estate, where 7 strings of lights were used with 120 bulbs on each



December 2010 Whitebridge Estate in the full grip of Winter although a beautiful scene, maintenance were very busy!



December 2011 high winds take down the Whitebridge Christmas tree, maintenance busy yet again!



December 2012 edition Whitebridge received the Community Spirit Award



Finally December 2013 saw the headline SPIRIT OF THE ESTATE when our maintenance team went that extra mile to help out Whitebridge with travellers

A acoustic attenuations

There is a new name about to appear on Unit 3, Canalside Road. A new company, founded by Tecni-Form owners Chris Fecher and Jon Ross, will be opening for business in the New Year. Acoustic Attenuations Ltd will be involved in the manufacture of components in polyurethane (PU) materials and foams, aimed at the 'off highway' vehicles market that has been the main outlet for Tecni-Form since the mid '80s.

In recent weeks there has been a steady stream of vehicles delivering smart new machinery, which a team of engineers has converted into a complete production line.

Acoustic Attenuations and Tecni-Form Managing Director, Chris Fecher said " Early in 2014, when setting up this new venture, we were fortunate to be joined by David Delaney, who had 23 years of experience in the manufacture of PU products. From the outset, our intention was to design the most efficient PU production line in the UK. Our Ops Director, Holger Wassink, and David Delaney, worked with established manufacturers to develop custom designed machinery. It has been a year in the making, but we will be open for business straight after Christmas. This new investment is a continuation of our successful partnership with Charles Baines and the Whitebridge team, going back some 18 years."

Whitebridge Coffee Shop

WOW! Where has the last 12 months gone?

Once again thank you for supporting us over the past year. We have been working hard to keep you all fed and watered. Not to mention all the buffets and working lunches. This is probably a good time to mention if you are planning an event or party in 2015 we do catering to suit any budget. Check out our facebook page for our delicious menus. www.facebook.com/whitebridge.coffee.shop. You can also take a look at our children's menu or pop in and see us at the coffee shop any day of the week between 7am and 3pm.

Why not try our **SPECIAL oak smoked pulled pork** it's delicious on a bap with gravy, stuffing and apple sauce.

As Fridays are particularly busy for our team we suggest you give us a call on **01785 815902** and place your breakfast orders on Thursday afternoon to avoid disappointment. With the added bonus that it will be ready and waiting for you to collect.



On another note many of you will have seen in the press and on facebook the list of food outlets in and around the Staffs area that have only been able to achieve 1 or no hygiene stars. You will be pleased to hear that after our inspection on the 3/12/14, we have yet again gained the full five stars and all the team can take a pat on the back for all their hard work. Finally we would all like to say a big thank you to everyone who has donated money to help the charities we supported this year it is greatly received and very much appreciated and it does help to make a difference.

Ken, Chris, Ann, Nat and Gina, would all like to wish you a very merry Christmas and look forward to seeing you all in the New Year.

BUSINESS NEWS.....From Janet Darby



PAYMENT ALLOWANCE

HAVE YOU RE-CLAIMED YOUR £2000 ?

Hopefully many business's have or are receiving Class 1 National Insurance reductions each time you run your 2014/2015 payroll until the £2,000 has been achieved. This will continue for tax year 2015/2016. The government will extend this allowance for employer NICs to care and support workers, to come into effect from April 2015.

HEADLINE NEWS:

It has been announced in the Autumn Statement 2014 that the **Small Business Rate Relief** will continue for another year which means the smallest businesses will continue to receive 100% relief from business rates until April 2016..

The government will also continue to cap the annual increase in business rates at 2% on the RPI increase in the business rates multiplier from April 2015 to March 2016—this will benefit all businesses paying business rates.

Don't forget you can now pay by 12 monthly installments rather than 10 !

The business rate system is to undergo a review in the foreseeable future

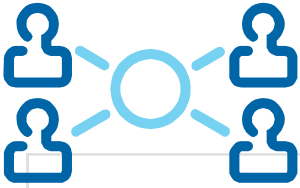
ABOLITION OF EMPLOYERS NATIONAL INSURANCE CONTRIBUTIONS FOR UNDER 21S'

As I mentioned in my business page in the Winter 2013 Edition, from April 2015 every employer with employees under the age of 21 will no longer be required to pay Class 1 Secondary National Insurance Contributions (NICs) on earnings up to the upper earnings limited (UEL), for those employees. The UEL in 2015/16 is expected to be £813.00 per week.

INCOME TAX PERSONAL ALLOWANCE AND BASIC LIMIT FOR 2015/16

As announced in the Autumn 2014 for 2015/16 the income tax personal allowance will see another substantial increase of £600 to £10,600. This is £100 more than was previously announced in the Budget. As the personal allowance will increase to 10,600 and the age-related allowance is no longer applicable to those born after 6 April 1938. Those born before 06 April 1938 receive a personal allowance of **£10,660**

£	2015-2016
Personal Allowance	10,600
Basic Rate Limit (20%)	31,785
Higher Rate Threshold (40%)	42,385

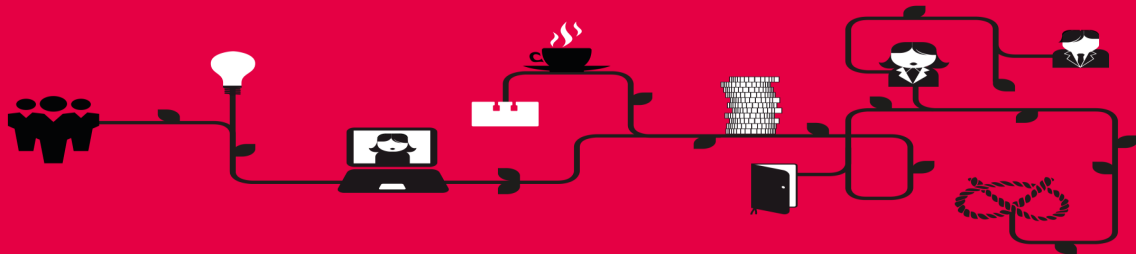


A RELAXED INFORMAL NETWORK EVENT

Once again we are hosting a joint networking event with North Staffordshire Chamber of Commerce here on Whitebridge Estates on Tuesday 21st April 2015.

Why attend a Networking Event? There are many reasons to attend;

- ◆ You can meet and find out how the Chamber of Commerce can help your business
- ◆ Start working relationships with other Companies that will lead to joint ventures and referrals
- ◆ Increase your marketing by meeting 'face to face' with the right people
- ◆ Find other suppliers and solutions to help with your problems
- ◆ Stay up to date with current trends, gather information from other Professionals to help your business
- ◆ Finally to socialise and enjoy!



We would like to invite Chamber members to join us for an informal joint networking event with businesses based at Whitebridge Estates in Stone.

Tenants at Whitebridge Estates are from a broad range of disciplines including manufacturing, engineering and professional services.

Don't miss this opportunity to expand your contacts and build new relationships.

At the event you will also hear about local funding opportunities.

This event is kindly sponsored and hosted by:



TO BOOK YOUR PLACE, PLEASE VISIT

www.staffordshirechambers.co.uk/events

Tuesday 21st April 2015

AGENDA

1100 - 1130 Registration and refreshments

1130 - 1140 Welcome from Whitebridge Estates and Stafford Chamber

1140 - 1150 Regional Growth Fund - Mat Hustwit, Staffordshire Chambers of Commerce

1150 - 1200 Local Funding - Sandra Butterworth, BIC

1200 - 1300 Networking and a light buffet **COST— FREE EVENT**

VENUE

Come Into Play

Whitebridge Estates

Whitebridge Lane

Stone

ST15 8LQ

Christmas and New Year Office, Security & Maintenance Arrangements

The Whitebridge Estate Office will be closed from 13:00 hours on Wednesday 24 December 2014, re-opening on Monday 5 January 2015 at 8.30 am.

The maintenance / fork lift truck service will also be suspended during this period. Our Security Officers will be on duty throughout the Christmas and New Year holiday.

Emergency Procedure & Contact Numbers for Whitebridge Estates

In the event of a major incident such as fire, explosion or flood you may need to evacuate your premises and notify your immediate neighbours to do the same. In normal business hours please contact the Estate office and at all other times please contact Security.

Below is a list of contacts who may also need to be notified.

EMERGENCY SERVICES
999

POLICE (non emergency)
101

TRANSCO (Gas)
0800 111 999

SEVERN TRENT (Water)
0800 783 4444

CENTRAL NETWORKS (Electricity)
0800 328 1111

ESTATE ELECTRICIAN
(Craig from Electrical Power Installations)
07876 406365

ESTATE PLUMBER
(Matt from GPH Services)
07974 472562

WHITEBRIDGE SECURITY
07974 788484

WHITEBRIDGE OFFICE
01785 817170



**FROM ALL STAFF
& SECURITY**

**Security incidents
dealt with by our
Security Team during 2014**

27	Unit insecurities
2	Unauthorised scrap dealers
3	Attempted theft
12	Activated burglar alarms
1	Railway incident
4	Suspect vehicles
2	Fly tipping
3	Power failures
2	Water leaks
3	Reports of damage
9	Miscellaneous reports involving security issues

Greystones HR Consulting and Prettytness are on the Move!

Rae and Steve Flather, who run Greystones HR Consulting (which provides HR Support to small and medium sized businesses) and Prettytness (selling hair accessories and costume jewellery online) are moving from Unit 10c to Unit 1 in the New Year.

Steve has run Greystones HR Consulting for many years, providing not only HR support to businesses, but also sells up-to-date and legally compliant employment documents online at www.employmentdocumentcompany.co.uk. Steve is a nationally recognised pay and equal pay specialist, advising larger organisations on their pay structures, pay levels and equal pay issues.

Rae runs Prettytness, an online business started just over a year ago to help Rae recover from the operation to remove a brain tumour. Prettytness—incorrectly spelt on purpose, of course—sells high quality hair accessories and costume jewellery both for every day and for that special occasion. Rae has recently added some lovely new products to her already extensive range. Take a look online at www.Prettytness.co.uk.

When we have moved, why not drop in for a chat if you have an HR issue or need some nice costume jewellery or hair accessories. Now there's an invitation you can't turn down!

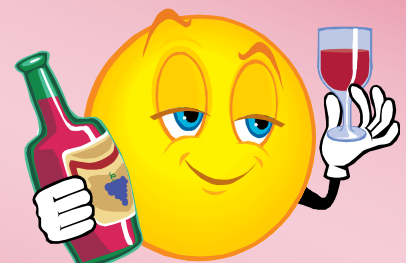


COMPETITION TIME! — WIN A BOTTLE OF WINE!

The above photograph shows the new flags that we have erected and some of them relate to different countries not flown before.

We will offer a bottle of wine to the first tenant to correctly identify the flags left to right.

Email answers to: helen@whitebridge.co.uk



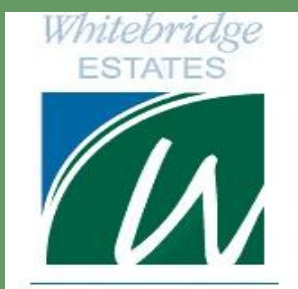


**WHITEBRIDGE
ESTATES LLP**

Whitebridge Lane
Stone
Staffordshire
ST15 8LQ

Phone: 01785 817170
Fax: 01785 812406

www.whitebridge.co.uk



Mrs Baines & Charles Baines

charles@whitebridge.co.uk

Phil Darby (Health & Safety/Operations Manager)

phil@whitebridge.co.uk

Janet Darby (Accounts Manager)

janet@whitebridge.co.uk

Helen Lawton & Bev Wilding(Reception/Administration)

helen@whitebridge.co.uk &

bev@whitebridge.co.uk

**Peter Arnold, Jim Bufton, Kevin Leah , Dave Kinder &
Gareth James**

(Maintenance)

Bill McKinnon, Bill Stockton & Roger Hawe

(Security)

THE BACK PAGE from Charles

I'm glad to report and read about another busy year at Whitebridge and naturally this bumper edition too. My thanks as always goes to the editor who put a great deal of time and effort into producing what I feel is a very unique newsletter for both tenants and owners here at Whitebridge.

As both my Grandfather and Father (the Colonel) were military men fighting in the 1st and the 2nd world wars respectively I felt compelled to write a small article in this newsletter about the outbreak of World War 1, we can never imagine what those young men felt 100 years ago and we must never forget. What Paul Cummins of Cummins Pottery Derby created at the tower of London was truly remarkable, I look forward to receiving my poppy which will be put in a glass case and displayed in our reception in due course.

On a lighter note Christmas is upon us and the end of another year at Whitebridge. My Mother and myself wish you a very merry Christmas and a wonderful new year.

Charles

